

CONFIDENTIALITY NOTICE:

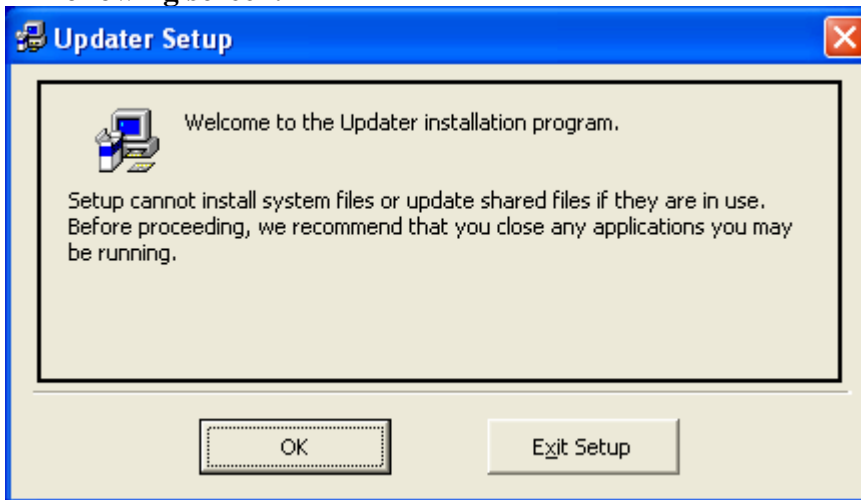
The content of this Bulletin is Confidential Information as defined in the applicable Independent Service Center Agreement. It is for the exclusive use of Onkyo Authorized Service Centers. Republication, dissemination or posting of this Bulletin on the internet or in any blog is strictly prohibited.

Procedure to upgrade the Main FW by using RS232 port

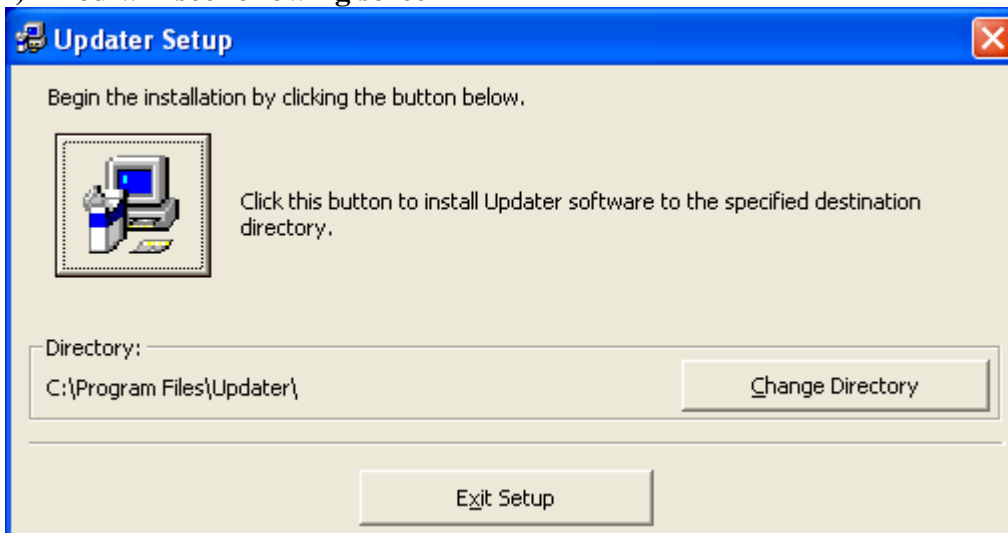
I) Installation process for VB6

Follow the steps below to install VB6 (Visual Basic 6) (If, VB 6 is not already installed in your PC):

- a) Double click the “Setup_Updater_905E.zip” file
- b) You will see the folder named “Setup_Updater_905E”
- c) Double click the “Setup_Updater_905E” folder
- d) Double click on “setup.exe” and “Install” process will begin. You will see following screen.



- e) Click OK
- f) You will see following screen



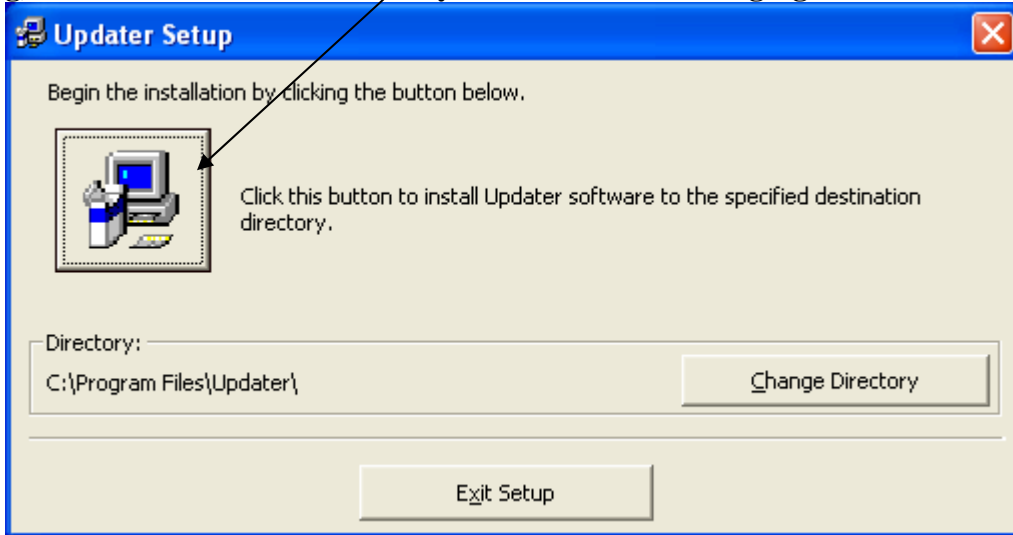
CONFIDENTIALITY NOTICE:

The content of this Bulletin is Confidential Information as defined in the applicable Independent Service Center Agreement. It is for the exclusive use of Onkyo Authorized Service Centers. Republication, dissemination or posting of this Bulletin on the internet or in any blog is strictly prohibited.

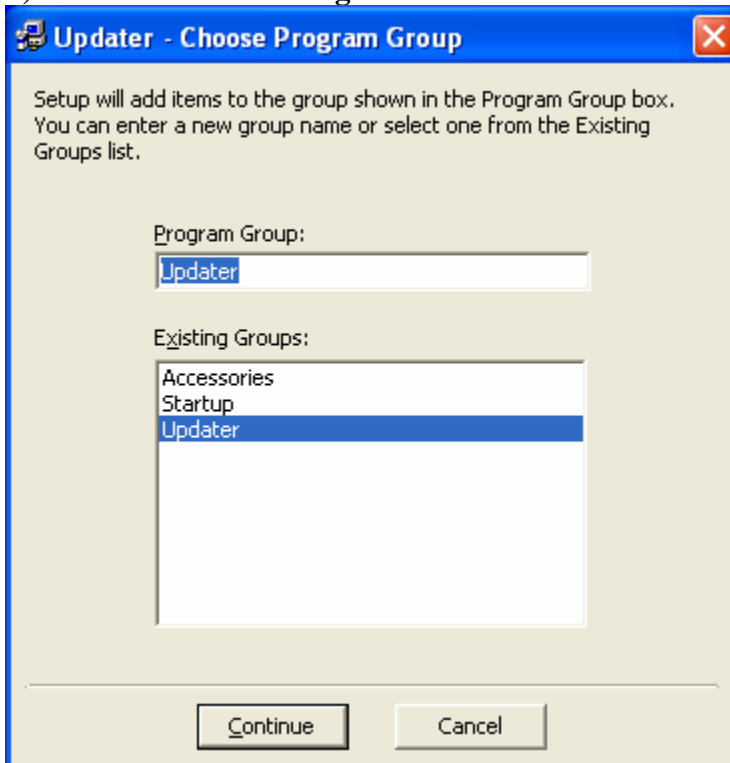
CONFIDENTIALITY NOTICE:

The content of this Bulletin is Confidential Information as defined in the applicable Independent Service Center Agreement. It is for the exclusive use of Onkyo Authorized Service Centers. Republication, dissemination or posting of this Bulletin on the internet or in any blog is strictly prohibited.

g) Click on the button shown by arrow in the following figure.



h) You will see following screen



i) Click on “Continue” button.

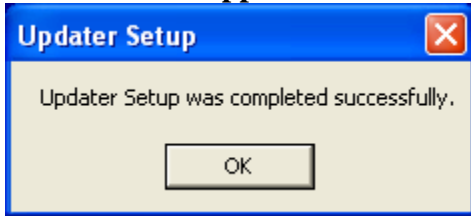
CONFIDENTIALITY NOTICE:

The content of this Bulletin is Confidential Information as defined in the applicable Independent Service Center Agreement. It is for the exclusive use of Onkyo Authorized Service Centers. Republication, dissemination or posting of this Bulletin on the internet or in any blog is strictly prohibited.

CONFIDENTIALITY NOTICE:

The content of this Bulletin is Confidential Information as defined in the applicable Independent Service Center Agreement. It is for the exclusive use of Onkyo Authorized Service Centers. Republication, dissemination or posting of this Bulletin on the internet or in any blog is strictly prohibited.

- j) The installation process will continue and when it is complete, following screen will appear.

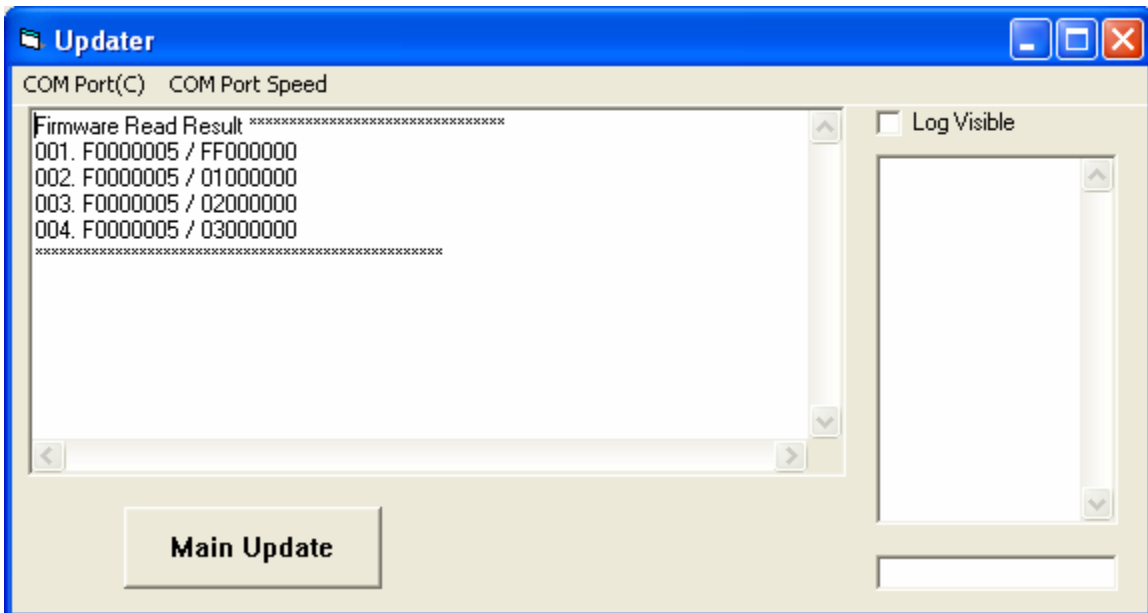


- k) Click “OK” button.
- l) This will complete the “ installation process for VB6”

II) Procedure for Upgrading Main FW on the unit

Connect the RS232 port of your PC to the receiver (unplugged) RS232 port by using a RS232 straight cable. Keep unit unplugged. Press ENTER button and in this condition you should plug the receiver in the AC outlet. You will see on the display “Main Update mode”. After this follow the following steps.

- a) Unzip “App_Updater_905.zip”
- b) Open the unzipped “App_Updater_905” folder and Double click on “update.exe”. You will see following GUI.



- m) Check the COM port. It should be same as the RS232 port of your PC connected to your receiver (usually COM1).
- n) Click on “Main Update” button.

CONFIDENTIALITY NOTICE:

The content of this Bulletin is Confidential Information as defined in the applicable Independent Service Center Agreement. It is for the exclusive use of Onkyo Authorized Service Centers. Republication, dissemination or posting of this Bulletin on the internet or in any blog is strictly prohibited.

CONFIDENTIALITY NOTICE:

The content of this Bulletin is Confidential Information as defined in the applicable Independent Service Center Agreement. It is for the exclusive use of Onkyo Authorized Service Centers. Republication, dissemination or posting of this Bulletin on the internet or in any blog is strictly prohibited.

- o) The unit will start first “Erase” function and then it will start “Write” function.**
- p) The whole process may take around 15 to 20 minutes.**
- q) If the power fails during this process, then close the above updater GUI by clicking on the X mark on top right side corner. When the power comes back, reopen the above GUI by clicking on “update.exe”. Then press “Main Update” and unit will continue writing process.**
- r) When the update is complete, the unit will go to standby mode.**
- s) Turn on the unit and check the upgraded main FW version by holding display button and then pressing Standby/On button.**

CONFIDENTIALITY NOTICE:

The content of this Bulletin is Confidential Information as defined in the applicable Independent Service Center Agreement. It is for the exclusive use of Onkyo Authorized Service Centers. Republication, dissemination or posting of this Bulletin on the internet or in any blog is strictly prohibited.